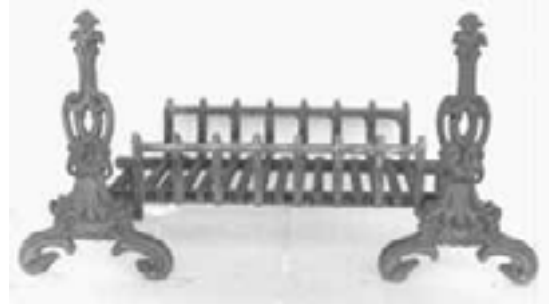




Wagga Iron Foundry

Firedogs and Firebacks Catalogue



Firedogs supporting fire baskets

Firedogs

For centuries firedogs have been used to support the ends of burning logs on hearths of fireplaces. Logs tended to roll out from the centres of the fireplaces. To prevent this from happening, cast iron fire baskets were used. These have front grates, which keep logs within the baskets.

If there is no circulation of air around the bottom grates of the baskets, the heat of the fire causes the cast iron to warp and 'rot'. Accumulation of ash prevents this required movement of air. The ash falling through the bottom grates of the baskets can be collected in a central recess in the hearth. If there is no recess, mounting the baskets on firedogs will provide room for ash pans to be placed under the baskets, as seen in the above pictures.



Fleu-de-lys



Regency



Methuselah



Torch

Weights and dimensions		
Firedog type	Weight kg	Height mm
Fleu-de-lys	8	240
Regency	12	510
Methuselah	12	495
Torch	8	185

Firebacks

The intense heat of the wood fires can cause bricks at the backs of fireplaces to crumble.

One of the first uses of cast iron was to make cast iron firebacks to prevent this from occurring.

Another advantage is that firebacks reflect the heat back into the room.

Emblems, crests, initials or brands can be cast onto the firebacks, in which case it is advisable to place the detail high, so that it is not hidden by the fire or the flames.

Remember that heat causes iron to expand. Allow room at the sides of the firebacks for this to happen, or else the side walls of the fireplace will crack. We cast firebacks in ductile iron which reduces the chances of the fireback from cracking.

